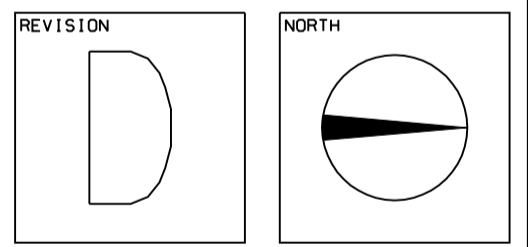
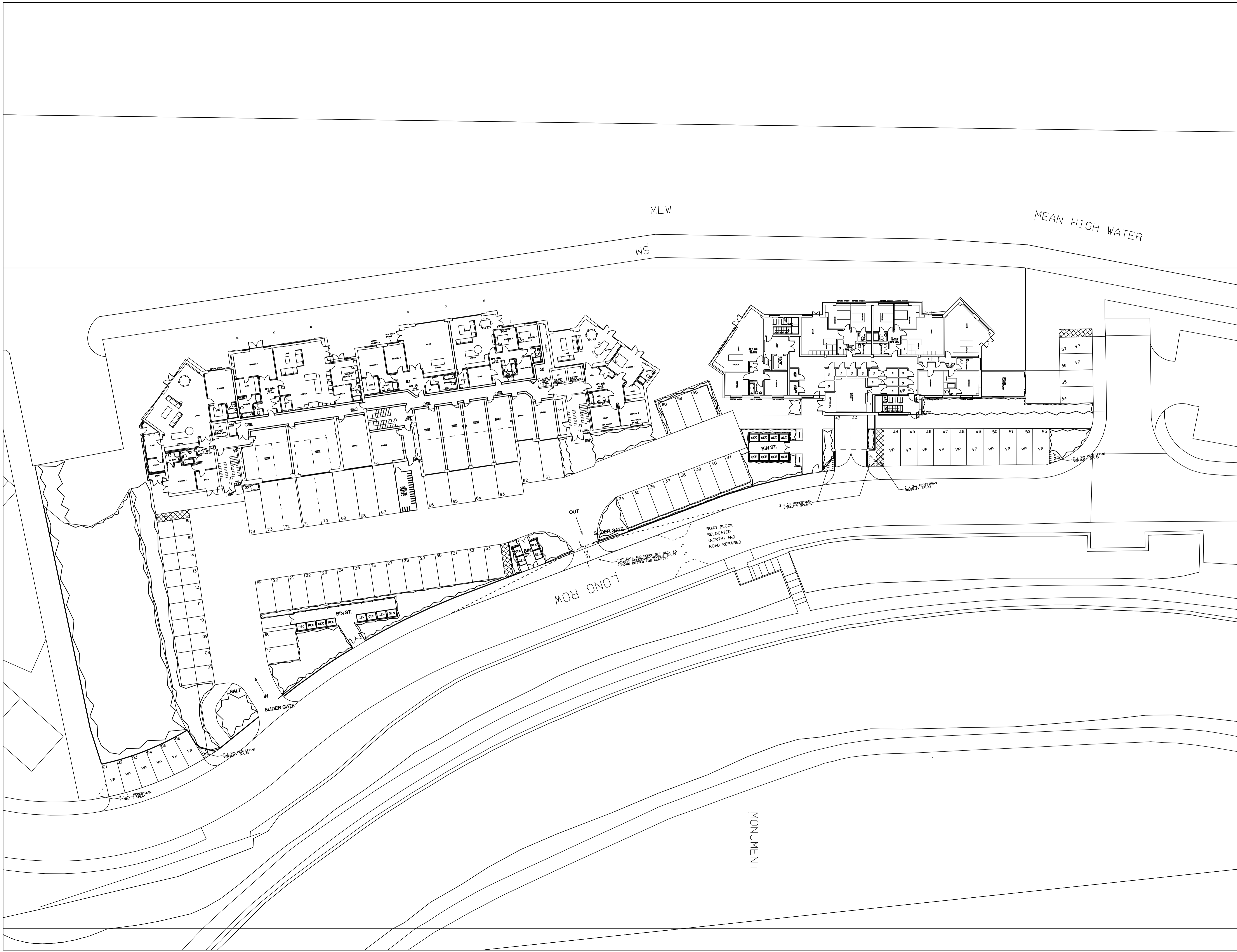


REVISION DATE / DESCRIPTION

- REVISION 'A' - 27.01.17
 - BIN STORE MARGINALLY REVISED
 - PAVING FOOTPATH WIDTH REVISED
 - LANDSCAPING REVISED ACCORDINGLY
- REVISION 'B' - 12.05.17
 - GENERAL CLIENT UPDATE
- REVISION 'C' - 13.07.17
 - IN SITE TRAFFIC FLOW INDICATED
 - BIN TYPES ANNOTATED
 - NECESSARY VISIBILITY SPLAYS SHOWN
 - GATE/RAILINGS REVISED ACCORDINGLY
 - VISITOR BAYS ANNOTATED
- REVISION 'D' - 03.08.17
 - PEDESTRIAN VISIBILITY SPLAYS INDICATED AS PER HIGHWAYS REQUIREMENTS



STAGE: PLANNING

PROJECT: PROPOSED EXTERNAL MODIFICATIONS FOR RESIDENTIAL PRIOR APPROVAL AT MARKET DOCK, LONG ROW, SOUTH SHIELDS, NE33 1JA

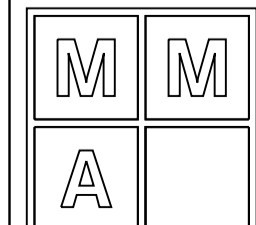
DRAWING: PROPOSED SITE PLAN

PROJECT NO.	DRAWING NO.	REVISION
2924	C-14	D

DATE	SCALE	DRAWN BY
JAN '17	1:2500A1 1:5000A3	MM

MARIO MINICHELLA ARCHITECTS

UNIT 4, WITNEY WAY,
HI-TECH VILLAGE,
BOLDON BUSINESS PARK
TYNE AND WEAR
NE35 9PE
T: 0191 3082227
M: WWW.M-M-A.NET
E: INFO@M-M-A.NET



THIS DRAWING IS COPYRIGHT © OF MARIO MINICHELLA LIMITED
NOT TO BE SCALED ALL DIMENSIONS TO BE CHECKED ON SITE